



AdaptNSW Newsletter - September 2020

Update on the AdaptNSW Forum

Given the current COVID-19 situation the AdaptNSW Forum will not run as a face-to-face event this year. However, we are proposing to hold a series of AdaptNSW webinars towards the end of 2020, and will be in contact on dates and themes in the coming month.

The AdaptNSW Forum began in 2013 to support the communication of the Adaptation Research Hub progress and outcomes. As the event has grown and evolved organically from this beginning it has achieved these goals. So, we will also use 2020 to undertake a strategic review of the Forum to refocus on the best ways to bring together like-minded people to continue to collaborate on climate change adaptation in NSW.

We are grateful for your ongoing support of AdaptNSW and this forum event, which provides a unique opportunity to showcase new knowledge and tools; and connect and engage a diverse range of people with the common goal of increasing resilience to climate change across our state.

We look forward to keeping you updated about the Forum through this newsletter and via our website: <https://climatechange.environment.nsw.gov.au/>

For any queries please email: adapt.nsw@environment.nsw.gov.au

Visit <https://nsw.gov.au/covid-19> for up to date information on COVID-19 and how to keep yourself and your community safe.

Increasing Resilience to Climate Change council grants now open

NSW councils can apply for a share of \$605,000 in the third round of Increasing Resilience to Climate Change council grants announced by the Department of Planning, Industry & Environment this week. The grants of between \$30,000 and \$120,000 are available for individual and groups of councils to increase their resilience and respond to identified climate risks and vulnerabilities in their region.

These grants have been established to encourage projects and programs with actions to address identified climate change risks beyond business as usual; regional collaboration on management of climate change risks and generation and sharing of lessons on best practice approaches to climate adaptation.

Collaboration with one or more councils, business, government agencies, community groups and regional or other organisations are encouraged to address identified climate risks and have projects up and running at the beginning of 2021.

This grants initiative is a partnership with Local Government NSW who are administering the grants on behalf of the Department. Applications are open until **Thursday 15 October 2020 at 5pm.**

To find out more and to apply visit the Local Government NSW website:
<https://lgnsw.org.au/increasingresilience>

Free webinar for councils - Monday 14 September 2-3pm

Are you a NSW council or potential partner? If you would like to find out more about the grants, meet the team and learn valuable insights for applying, The Department is hosting a **free webinar on Monday 14 September from 2-3pm.**

Please [register your interest for the webinar here](#)

First grants to increase community resilience to climate change

Twenty-three community groups in NSW have been awarded a share of \$615,659 in funding through the Department of Planning, Industry & Environment's, Increasing Resilience to Climate Change community grants. The grants are being provided to help them deal with the impacts of climate change in their local area and deliver on-ground action that builds the resilience of our state. Community groups, traditional owner corporations and not-for-profit organisations have a frontline role in managing the impacts of climate change in their communities.

Read these inspiring stories on how our communities are taking action now: <https://bit.ly/3eZnSys>



*Upper Shoalhaven Landcare's
Healing Country and Community with Good Fire Practices*

Climate research update

Climate change impacts research delivered for the Australian Alpine region

For the first time, climate information from the [NSW and ACT Regional Climate Modelling Project, or NARClIM](#), was used to investigate a range of climate change impacts on the NSW and ACT Alpine region, located in the south-eastern corner of mainland Australia.

The project, led by The Department in partnership with the University of New England and University of Technology Sydney, delivers critical information to decision makers to support the development of climate change adaptation plans in the region.

[READ MORE >](#)





Feeling the extremes

Across NSW and Australia, extreme weather events are projected to worsen as the climate warms. For most of us the impacts of climate change will be felt most through changes in extreme climate events.

The Department brought together internal and external experts to review the information on extreme climate events including rainfall, temperature, storms, wind gusts, extreme East Coast Lows, bushfires and fire weather and compounding extreme events.

The findings of this climate research project are now available in the NSW Climate Extremes Baseline Assessment report.

[ACCESS HERE >](#)

WeatheX: Severe weather reporting for citizen scientists

Australian researchers in partnership with The Department have developed the WeatheX app. The app aims to engage citizen scientists to report and photograph observations of severe weather events, including strong winds, hail, rain and flooding, when it is safe to do so. Data collected will be used by researchers and collaborators to better understand the impacts of severe weather events and improve predictions.

Search for WeatheX in the Android or iOS app stores; or visit weathex.app for more information.



Collaborating to adapt our critical infrastructure

The Department has commenced the XDI NSW project, partnering with critical infrastructure owners and operators across NSW to enable them to identify their physical climate risks and support adapting infrastructure to climate related hazards. The project builds on the [international award-winning pilot project](#) in the Sydney metropolitan area. Over the next two years, the project will continue to develop and support its participants to identify direct and interdependent risks and investigate collaborative approaches to adaptation.

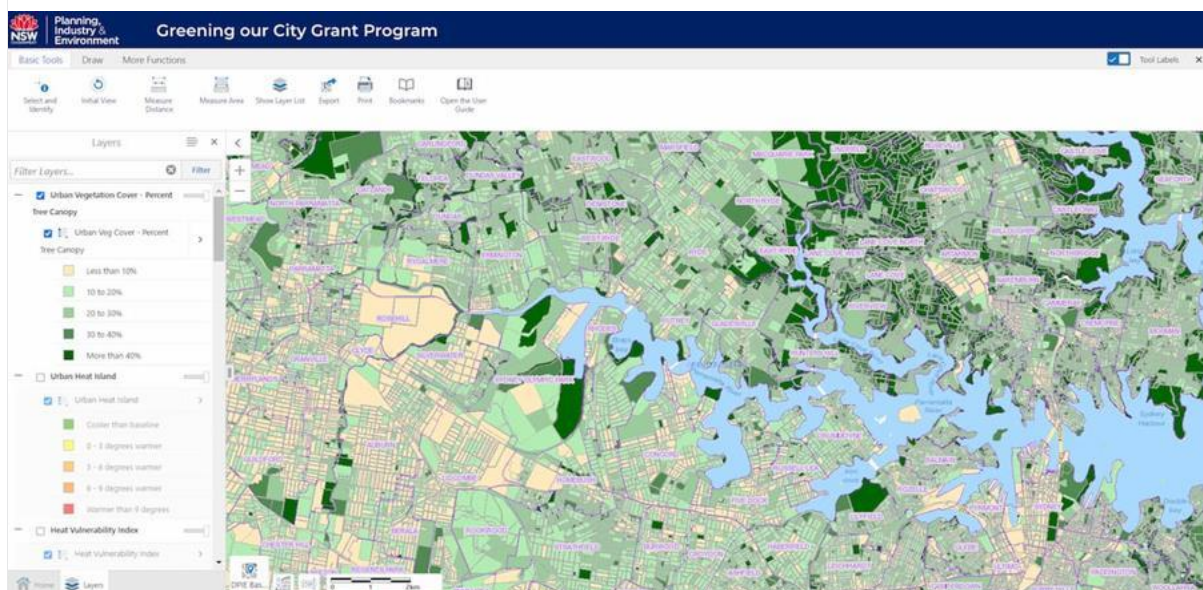
To find out more email: adapt.nsw@environment.nsw.gov.au.

One million trees in Greater Sydney by 2022

The [Greening our City](#) Premier's Priority aims to increase tree canopy and green cover by planting one million trees in Greater Sydney by 2022. It is part of a broader commitment by the NSW Government to plant five million trees in Greater Sydney by 2030. Trees are an important part of our city's green infrastructure, critical to improving the city's sustainability, liveability and resilience to climate change.

The [Greening our City Grants Program](#) supports local councils and their partners in Greater Sydney to enhance urban tree canopy and green cover by funding tree planting and demonstration projects in public spaces.

An online tool has been developed by The Department to support local councils with their applications. The new tool brings together a range of spatial datasets, in particular, the urban vegetation cover and urban heat datasets to help select the location of tree planting sites and inform best practice approaches for tree planting and broader urban greening initiatives.



Our mailing address is:
Locked Bag 5022 Parramatta 2124

We sent you this email as a customer of the [Department of Planning, Industry and Environment](#).
If this email was sent to you in error, you can manage your subscription here or unsubscribe below. Take a look
at our [privacy policy](#).